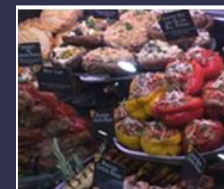


**COMPLETE
RETAIL
SOLUTIONS**

Teamwork in Action

Complimenting leading edge suppliers; delivering complete **end-to-end solutions** that help drive down costs and **Create Display Impact...**

- **Corum Digital**, "Technology That Powers Visual Communications"
- **Hubert Canada**, "Worldwide Excellence in Food Merchandising"
- **Maintech**, "POS mounting systems, design and manufacturing"
- **Southern CaseArts**, "Creators of Fresh Food Merchandisers"
- **Sign Nation**, "Specialist in interior and exterior signage"
- **Pan-Oston**, "Metal fabricators, checkouts and kiosk specialists"
- **CRS Fixturing Group**, "Award Winning Millwork and Fixturing"
- **Airwave Modular Produce Systems**, Scientifically developed modular fixtures and trays represented in Canada by Pan-Oston.
- **CRS NationWide Service**, "Coast to Coast Service Partners"

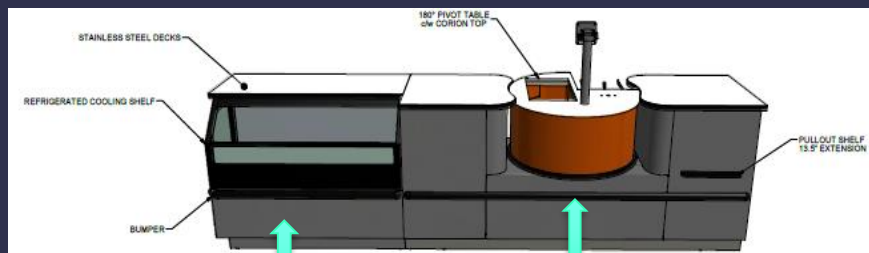


Working together is far more effective than working individually.

Specializing in **total front of store** cash and service systems



NEW designs for self-scan kiosks →



See our NEW
refrigerated shelf
Insert ...

Introducing
Pan-Oston's
New convertible self-scan

www.panoston.ca



Leaders in Smaller Format Specialty Cases



A CRS
Founding
Partner



**COMPLETE
RETAIL
SOLUTIONS**



www.southerncasearts.com

Representing Southern CaseArts in Canada

**COMPLETE
RETAIL
SOLUTIONS**

FIXTURING GROUP

**Complete Millwork from
Nation-Wide Rollouts to
Custom Unique Solutions...**

- Incorporating a full scope of materials
- New technology
- Combined resources
- **New concepts that help reduce operating costs**

Introducing

airwave

The Industry's first scientifically developed system for increasing produce sustainability



**INCREASE PRODUCE
SUSTAINABILITY**



www.completeretailsolutions.com

Turn lookers into buyers

• Merchandising Expertise

- Take advantage of our free visual merchandising consultation to grow your business. We'll work closely with you to understand your business plan, goals and budget, so we can create a strategy that gets you results.



Cheese Concierge

- Recommends cheeses based on other cheeses the customer likes – at the point of purchase
- Only recommends in-stock product
- Generate advertising revenue
- Leverage analytic insight to tailor promotions and continually improve results





A CRS Collaborative partner

Architectural and Retail
Signage Specialists

www.signnation.ca



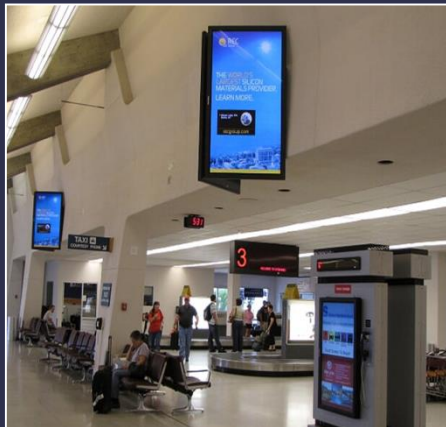
**COMPLETE
RETAIL
SOLUTIONS**



A CRS Founding Partner

COMPLETE
RETAIL
SOLUTIONS

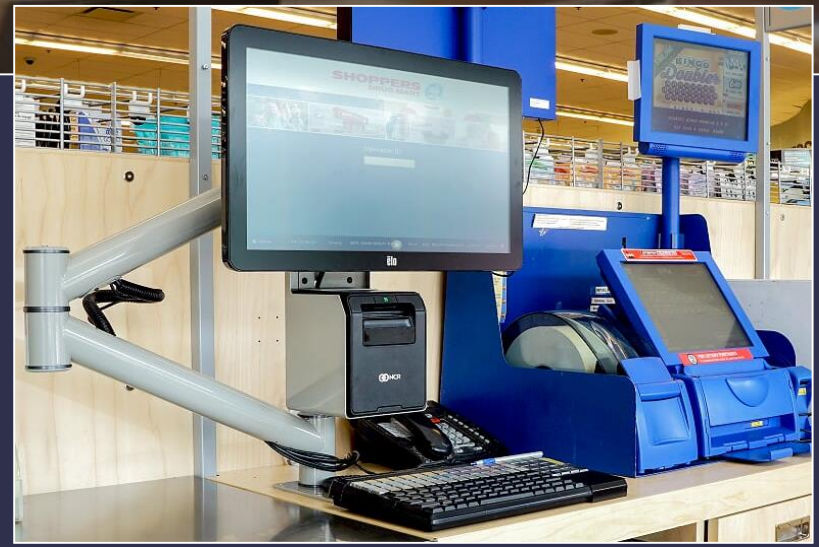
Technology that Powers Visual Communications



www.corumdigital.com

TECHNOLOGIES THAT POWER ENTERPRISE SOLUTIONS

POINT OF SALE CREATING THE BEST POINT-OF-SALE EXPERIENCE



**COMPLETE
RETAIL
SOLUTIONS**

CRS Fixturing Group

A CRS Partner Collaborative Associate

Increase the impact of signage
and digital... Plan it at the start...



CHEESE CONCIERGE

Concept: Hubert
Fabrication: Pan Oston
Digital: Corum Digital
Signage: Sign Nation

A CRS Co-produced Project

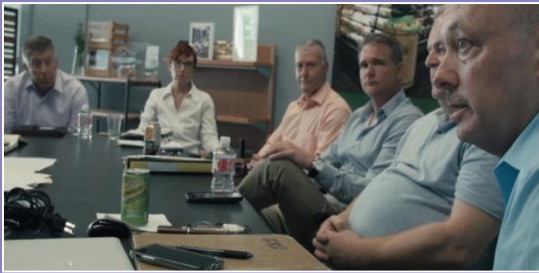


**COMPLETE
RETAIL
SOLUTIONS**

INNOVATION CENTRE

2 Select Ave, unit 9 Toronto, Ontario M1V-5J4

We invite you to visit our Toronto showroom...



... an environment that allows retailers to get away from the day to day to explore ideas, see new innovations.



Seeing what's going on here, a lot of new ideas and forward thinking". Giancarlo, Vince's Market.

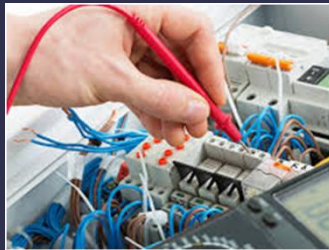
Thank You.

Glen Bonner VP Sales

1 705-748-4811 ext. 269

glen.bonner@panoston.ca

www.completeretailsolutions.com



Since 1979 we have been providing full
NATION-WIDE Installation
and **Factory Approved Service**



HUBERT

MAINTech
GROUP OF INDUSTRIES

Pan-Oston
Your Complete Retail Solution



**COMPLETE
RETAIL
SOLUTIONS**
Fixturing Group



Pan-Oston
Your Complete Retail Solution
**COMPLETE
RETAIL
SOLUTIONS**
**NationWide
Service**

**COMPLETE
RETAIL
SOLUTIONS**